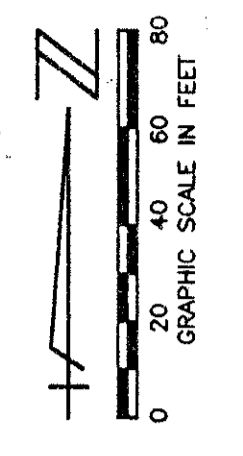


ADDISON RESERVE PARCELS SEVEN & EIGHT

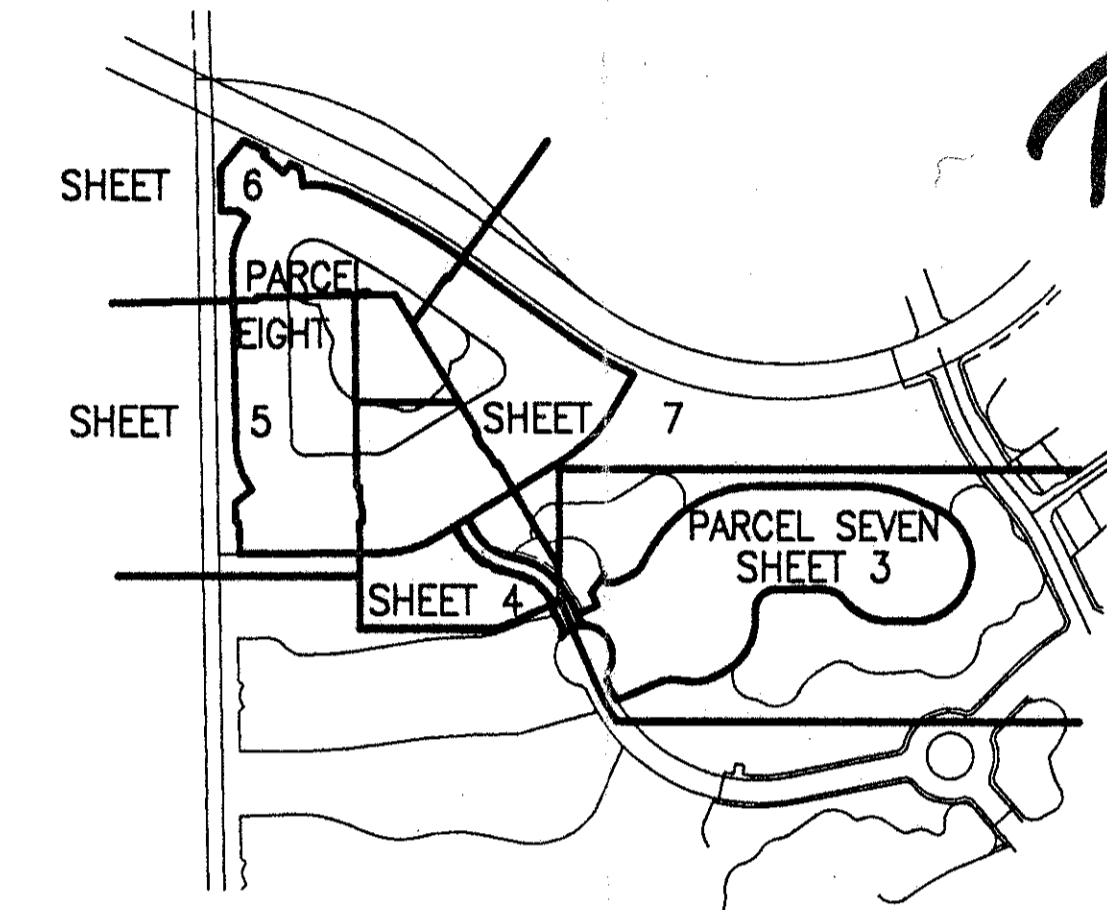
PART OF GLENEAGLES/POLO CLUB WEST P.U.D.
BEING A REPLAT OF TRACT 7, TRACT 8, TRACT C AND TRACT R,
"ADDISON RESERVE PLAT THREE"
(P.B. 78, PGS. 5 - 12)
SITUATE IN SECTION 28, TOWNSHIP 46 SOUTH, RANGE 42 EAST
PALM BEACH COUNTY, FLORIDA
JULY, 1996 SHEET 6 OF 7

STATE OF FLORIDA
COUNTY OF PALM BEACH
THIS PLAT WAS FILED FOR
RECORD _____ DAY OF _____
AD, 1996 AND DULY RECORDED
IN PLAT BOOK _____ ON PAGES
_____ AND _____
DOROTHY H. WILKEN, CLERK
BY: _____, D.C.

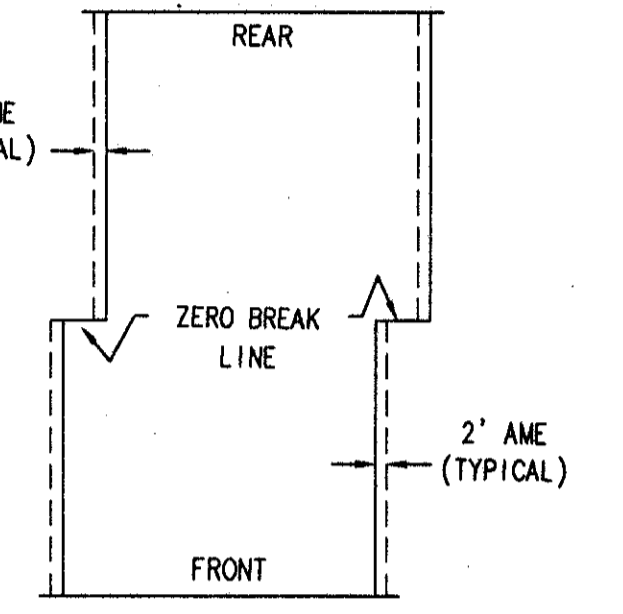


CIRCUIT COURT SEAL

*Pet. 80-215(H)
ALOC. #0002
S/R/K*



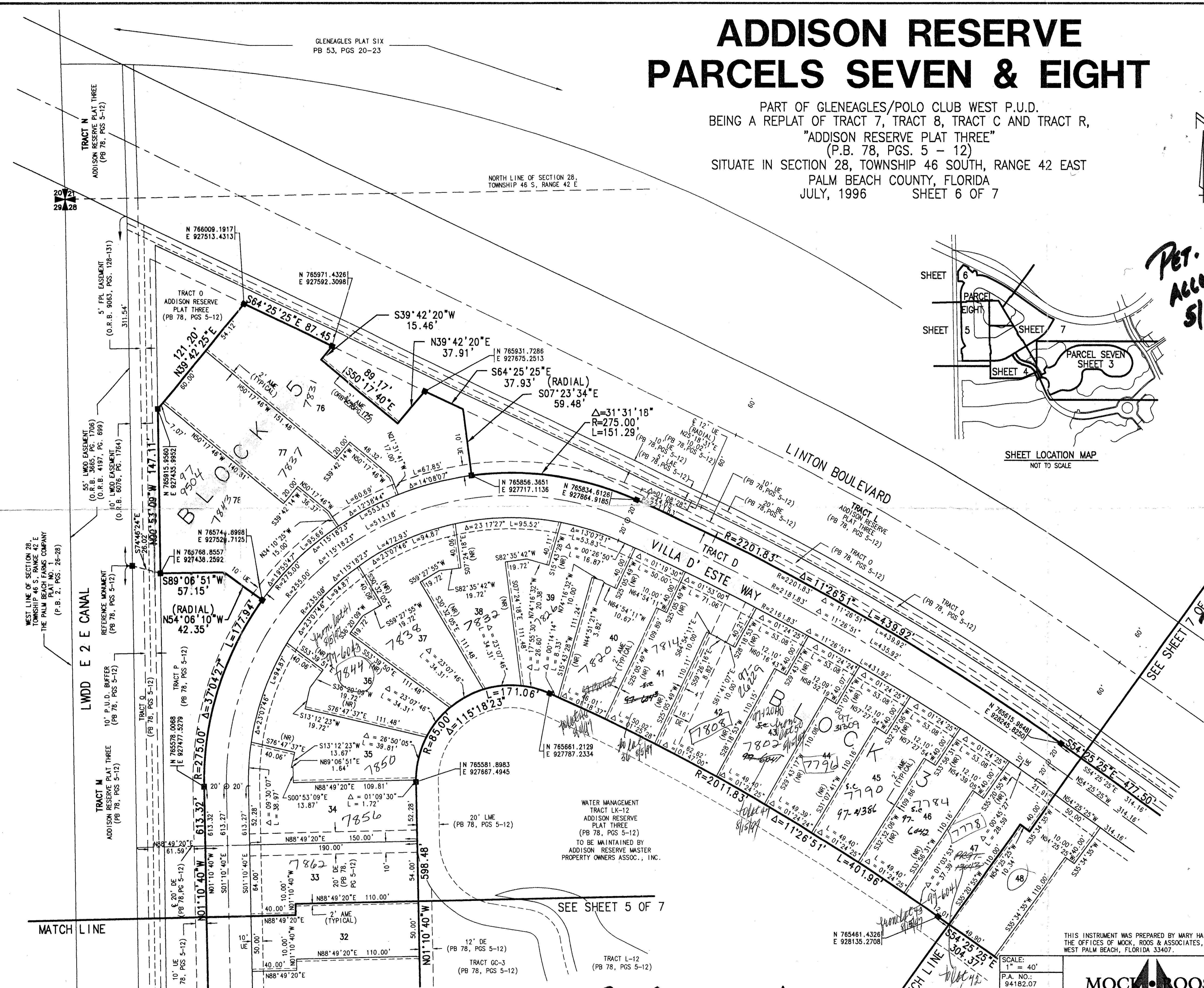
SHEET LOCATION MAP
NOT TO SCALE



DETAIL FOR ACCESS AND
MAINTENANCE EASEMENT
NOT TO SCALE

NOTE: AN ACCESS AND MAINTENANCE EASEMENT, 2 FEET
IN WIDTH, EXISTS ON EACH LOT FROM THE ZERO
BREAK LINE TO THE FRONT, AND FROM THE ZERO
BREAK LINE TO THE REAR, ADJACENT TO AND
CONTIGUOUS WITH THE ZERO LOT LINE OF THE
ADJOINING LOT. THIS EASEMENT IS FOR ACCESS
AND MAINTENANCE AND IS IN FAVOR OF THE
ADJOINING LOT. ITS SUCCESSORS AND ASSIGNS,
WITHOUT RECOURSE TO PALM BEACH COUNTY.

*POLO CLUB WEST/
GLENEAGLES PUD*



SUBDIVISION * ADDISON RESERVE
BOOK 78 PAGE 131
FLOOD ZONE B FLOOD MAP #415A
QUAD # 52 ZONING RTS
SE 80-215 ZIP CODE 33446
PUD NAME GLENEAGLES

0208-021

78/131
SHEET 6 OF 7

THIS INSTRUMENT WAS PREPARED BY MARY HANNA CLODFELTER, P.L.S. IN
THE OFFICES OF MOCK, ROOS & ASSOCIATES, INC., 5720 CORPORATE WAY,
WEST PALM BEACH, FLORIDA 33407.

SCALE:
1" = 40'
P.A. NO.:
94182.07
DATE:
JULY 1996
DRAWING NO.:
45-42-25-98

MOCK ROOS
ENGINEERS PLANNERS
5720 Corporate Way, West Palm Beach, Florida 33407
(407) 683-3113, fax 478-7248

**ADDISON RESERVE
PARCELS SEVEN & EIGHT**
PART OF GLENEAGLES/POLO CLUB WEST P.U.D.
BEING A REPLAT OF TRACT 7, TRACT 8, TRACT C AND TRACT R,
"ADDISON RESERVE PLAT THREE"
(P.B. 78, PGS. 5 - 12)
SITUATE IN SECTION 28, TOWNSHIP 46 SOUTH, RANGE 42 EAST
PALM BEACH COUNTY, FLORIDA

REV: 9-17-96
CAD FILE:
C:\ADD\ADDIRP12